

premec

Product Summary 2024



Thanks to its experience and know-how in precision mechanics, Premec is able to satisfy the specific demands of the writing industry.

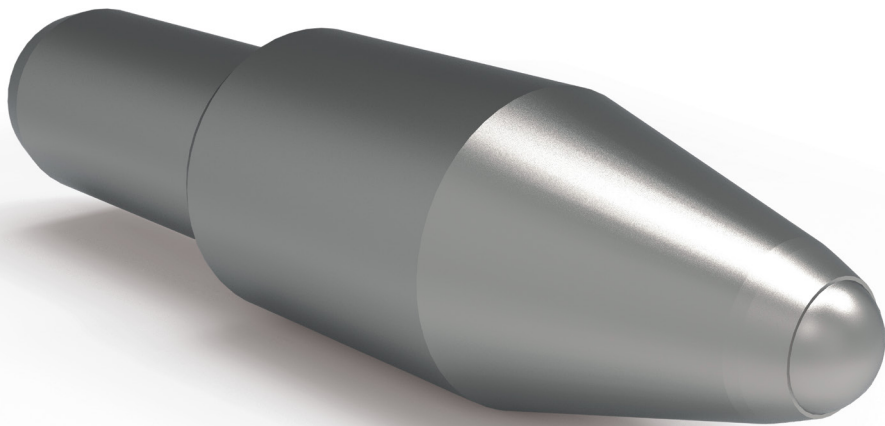
Tips, inks and refills are engineered and developed to cover the different needs of writing components with uncompromising quality.



SVHC compliance?

In June 2018 lead (Pb) has been included in the SVHC List of Substances of Very High Concern when its mass content is higher than 0.1% (REACH). In the US, CPSIA 2008 regulation limits the mass content for lead to max. 0.009%. Demanding challenges. Raw materials commonly used to manufacture tips (brass, nickel silver - copper alloy - and stainless steel) surpass significantly these limits.

No problem.
At Premec lead-free tips
are the new standard.



Excellent performance and stability

Our stainless steel lead-free alloy tips guarantee the same resistance against corrosion when compared to stainless steel tips with standard lead content.

Compared with ball point tips manufactured in BNP and NS, switching to stainless steel lead-free alloy tips allows for a series of relevant performance improvements:

- Premec lead-free tips made in steel appear in an elegant silver matt tone that does not change over time.
- They are less exposed to corrosion even by accidental contact with various chemical solutions.
- For high power refills such as Parker Metal (5 km writing length) the use of lead-free tips made in stainless steel (SS/10) ensure a uniformity of writing until the end of charge: they are more reliable while guaranteeing the constant level of high performance.
- They are more robust both in terms of abrasion of the rim on the paper and the abrasion made by the ball during the rotation in the tip housing.
- Like all tips made in stainless steel our lead-free tips show an excellent starting.

For all systems. Sustainable and consumer friendly.

Tips made of Premec's new stainless steel lead-free alloy are used to manufacture a wide variety of existing and new design tips:

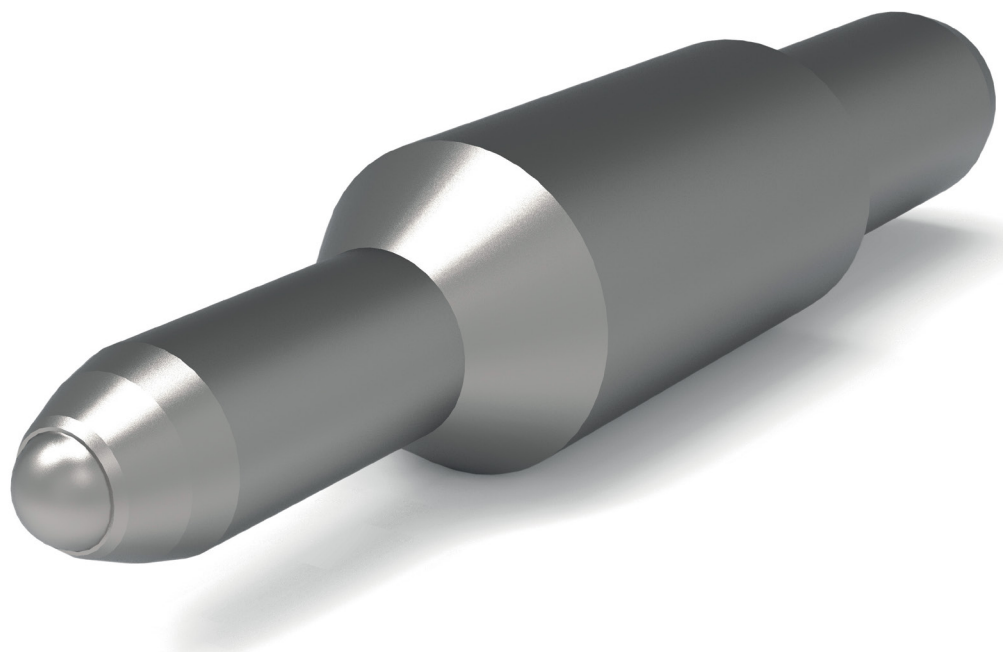
- Any type of gel tip, with and without spring loaded, without limitation of ball diameter
- Any type of roller tip, without limitation
- A very wide variety of ball point tips to match all high and medium viscosity inks and the majority of the low viscosity inks

Tip family	Ink	Ball ø (mm)
Gel	No limitations	0.3 - 1.0, no limitations
Roller	No limitations	0.5 - 0.7, no limitations
Ball Point	No limitations in terms for High/Medium viscosity inks	0.6 - 1.6 (0.5 tbc)
	Low Viscosity inks may show constraints for ball diameters inferior to 1.0 mm.	

No limitations in terms of shape, conical or needle

Continuous fiber intake
significantly reduces
the performance
of the writing instrument.

Not anymore.
Now there is AFIT.



afit

An innovation from the laboratories of Premec in Cadempino, Switzerland

AFIT. The revolutionary Anti-Fiber-Intake-Tip

New AFIT.
For maximum customer satisfaction.

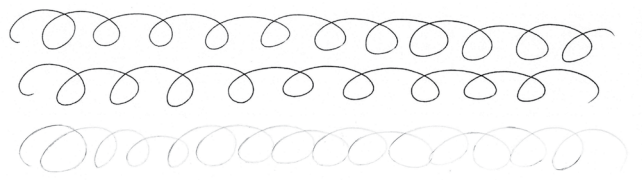
When paper and tips interact, fibers are taken into the tips and tend to progressively reduce the performance of the system. The innovative Anti-Fiber-Intake-Tip from Premec offers a cost-effective solution to this problem. In combination with Easyfluidal and Easyfluidal.1 Dokumental Ink, AFIT not only guarantees that no fiber is taken into the tips anymore. It also provides an extremely smooth writing experience with extremely well defined and intense colours and lines until the refill is completely consumed.

A unique performance that translates into significantly more reliable and sustainable products with a longer lifetime and a higher customer satisfaction.

Standard refill



start →

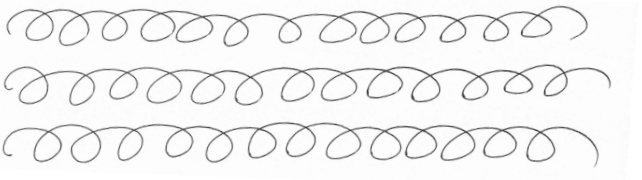


Refill with new AFIT

afit



start →



AFIT – your cost-effective solution for:

- Super smooth writing feeling
- Higher customer satisfaction
- Longer lifetime
- More reliable
- Higher sustainability

Material and sizes

Ball material	Ball ø (mm)
NS	0.7
NS	1.0
SS	1.0

New AFIT by Premec can be combined with both stick and retractable pens. Also available as refill. Contact your Premec sales representative for more information.

Notes

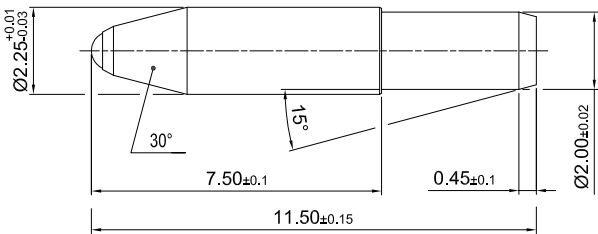
Oil Base Tips

Key for the tip configuration Example 112NS/05TC	
NS	Tip body material / SS = stainless steel / NS = nickel silver / BNP = Brass nickel plated / B = Brass
0.5	Ball diameter in mm
TC	
Additional information	
ESxx	Set-up of the tip / identifies writing performance properties & ink type range Ask for our assistance to identify the set-up number suitable to meet your requirements
Code number	Premec ERP-item number / it summarizes in one unique number all tip- and specification-parameters

HOUSING Ø2.25 MM

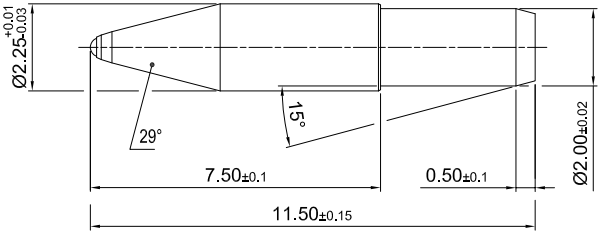
Model 112

Tip N°	Housing material	Ball material	Ball ø (mm)
112	B - BNP	SS - TC	0.7 - 1.0



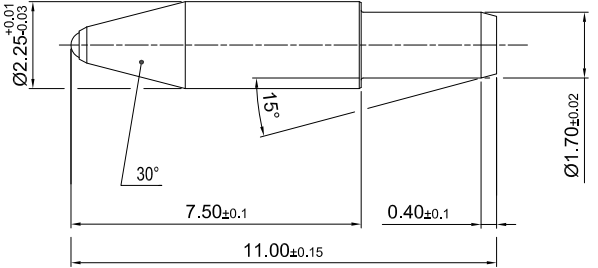
Model 112

Tip N°	Housing material	Ball material	Ball ø (mm)
112	NS	TC	0.5 - 0.7 - 0.8 - 1.0 - 1.2
	SS (available Pb-Free)	TC	0.7 - 0.8 - 1.0



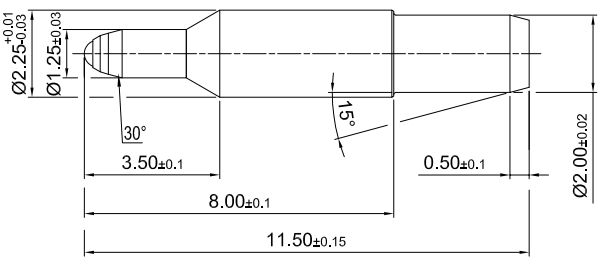
Model 122

Tip N°	Housing material	Ball material	Ball ø (mm)
122	BNP	SS - TC	0.7 - 0.8 - 1.0
	NS	TC	0.5 - 0.7 - 0.8 - 1.0



Model 153

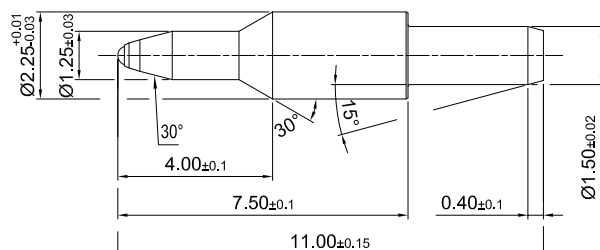
Tip N°	Housing material	Ball material	Ball ø (mm)
153	NS	TC	0.5 - 0.7 - 1.0



HOUSING Ø2.25 MM

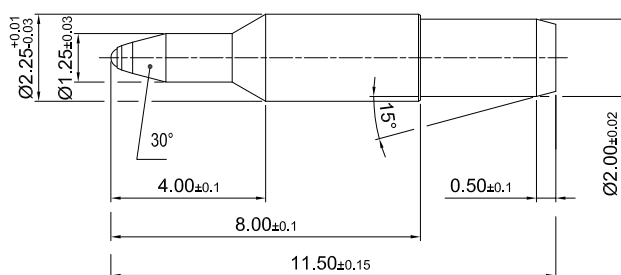
Model 154

Tip N°	Housing material	Ball material	Ball ø (mm)
154	NS	TC	0.5



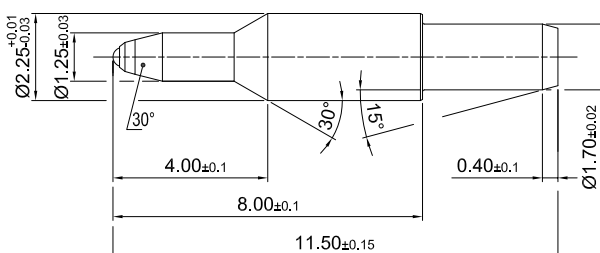
Model 155

Tip N°	Housing material	Ball material	Ball ø (mm)
155	NS	TC	0.5 - 0.6 - 0.7 - 0.8 - 1.0



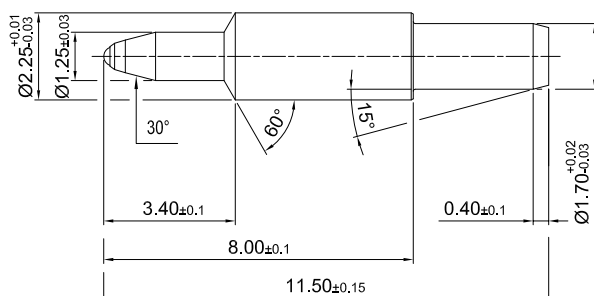
Model 157

Tip N°	Housing material	Ball material	Ball ø (mm)
157	NS	TC	0.4 - 0.5 - 0.6 - 0.7 - 0.8 - 1.0



Model 158

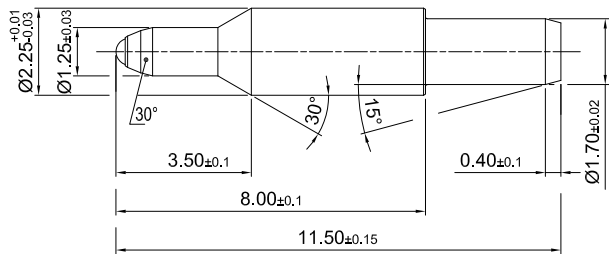
Tip N°	Housing material	Ball material	Ball ø (mm)
158	NS	TC	0.3 - 0.4 - 0.5 - 0.6 - 0.7 - 0.8 - 1.0



HOUSING Ø2.25 MM

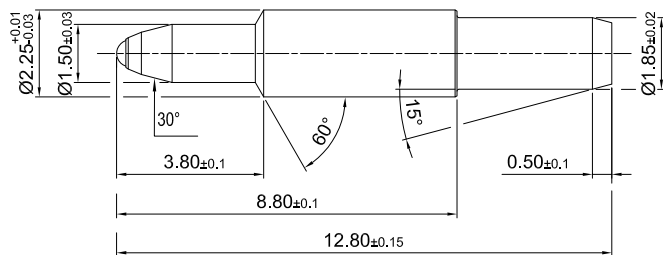
Model 166

Tip N°	Housing material	Ball material	Ball ø (mm)
166	NS	TC	0.4 - 0.5 - 0.7 - 1.0



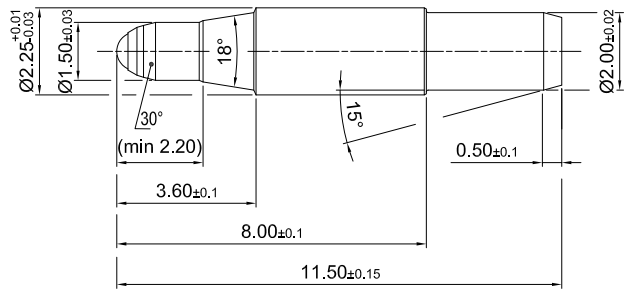
Model 167

Tip N°	Housing material	Ball material	Ball ø (mm)
167	NS	TC	0.7



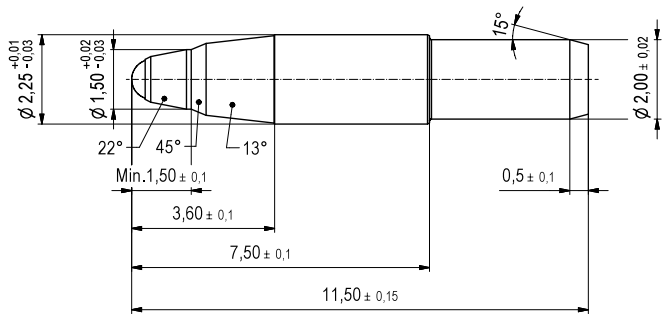
Model 171

Tip N°	Housing material	Ball material	Ball ø (mm)
171	NS	TC	1.0



Model 182

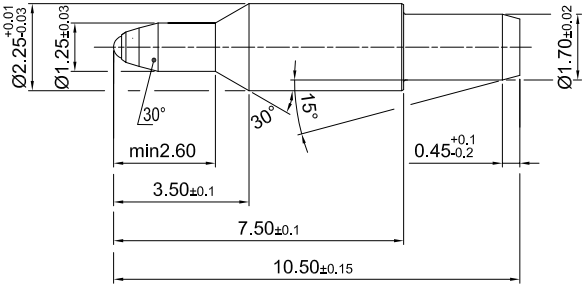
Tip N°	Housing material	Ball material	Ball ø (mm)
182	SS (available Pb_Free)	TC	1.0



HOUSING Ø2.25 MM

Model 187

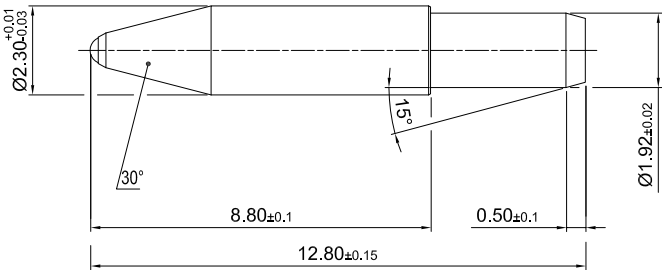
Tip N°	Housing material	Ball material	Ball ø (mm)
187	NS	TC	0.6



HOUSING Ø2.30 MM

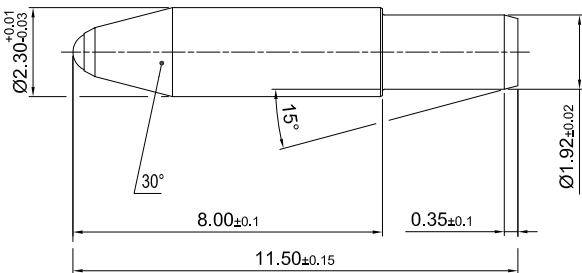
Model 113

Tip N°	Housing material	Ball material	Ball ø (mm)
113	BNP - NS	TC	0.7 - 0.8 - 1.0



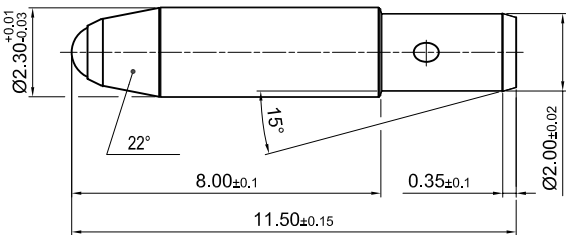
Model 123

Tip N°	Housing material	Ball material	Ball ø (mm)
123	NS - SS (available Pb-Free)	TC	0.5 - 0.7 - 1.0 - 1.2 - 1.4 - 1.6



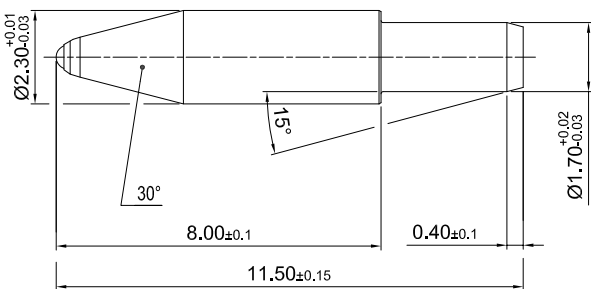
Model 123
with spring

Tip N°	Housing material	Ball material	Ball ø (mm)
123/CS	SS (available Pb-Free)	TC	1.4



Model 133

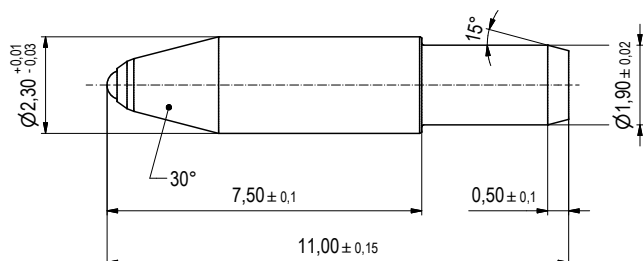
Tip N°	Housing material	Ball material	Ball ø (mm)
133	NS	TC	0.6



HOUSING Ø2.30 MM

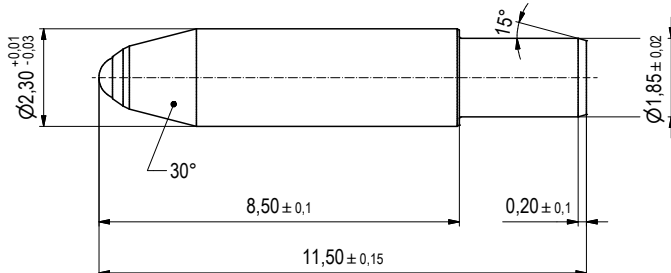
Model 129

Tip N°	Housing material	Ball material	Ball ø (mm)
129	NS	TC	0.5 - 0.7



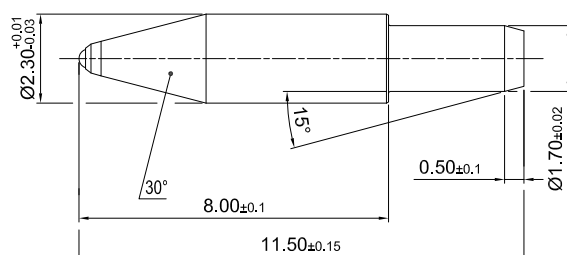
Model 178

Tip N°	Housing material	Ball material	Ball ø (mm)
178	NS - SS (available Pb-Free)	TC	1.0



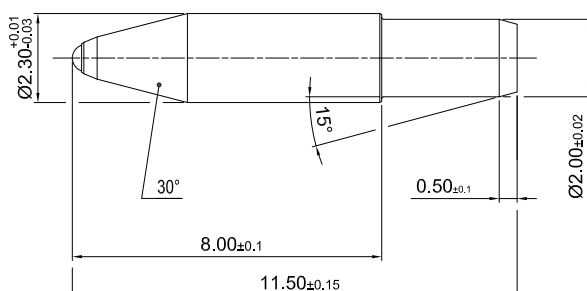
Model 192

Tip N°	Housing material	Ball material	Ball ø (mm)
192	NS	TC	0.5



Model 270

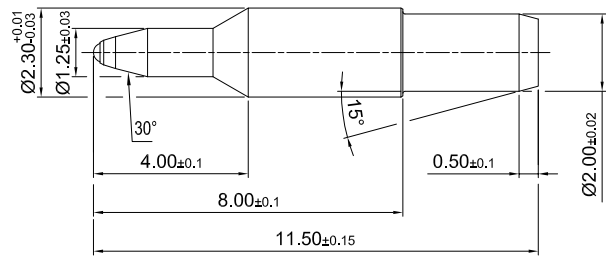
Tip N°	Housing material	Ball material	Ball ø (mm)
270	NS	TC	0.5 - 0.7 - 1.0
	SS (available Pb-Free)	TC	1.0



HOUSING Ø2.30 MM

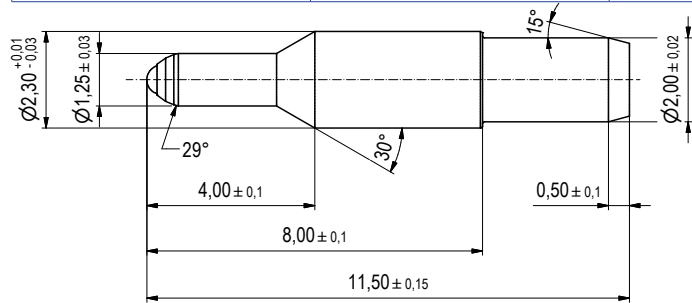
Model 149

Tip N°	Housing material	Ball material	Ball ø (mm)
149	NS	TC	0.4 - 0.5



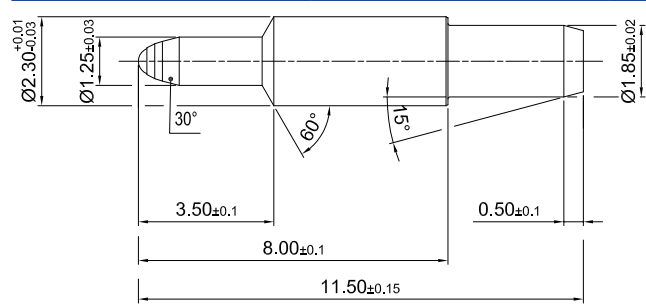
Model 151

Tip N°	Housing material	Ball material	Ball ø (mm)
151	NS	TC	0.7



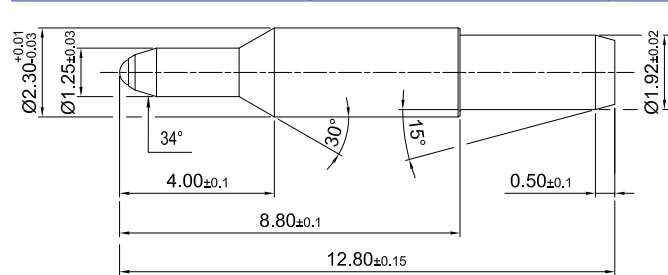
Model 159

Tip N°	Housing material	Ball material	Ball ø (mm)
159	NS	TC	0.7



Model 161

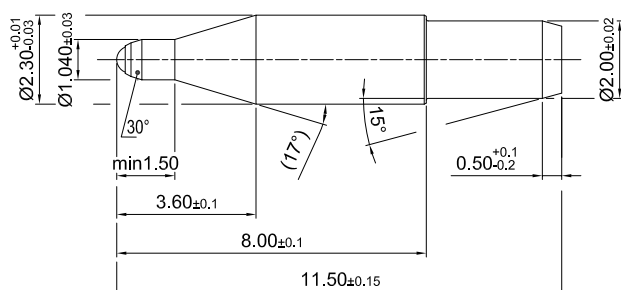
Tip N°	Housing material	Ball material	Ball ø (mm)
161	NS	TC	0.6 - 0.7 - 1.0



HOUSING Ø2.30 MM

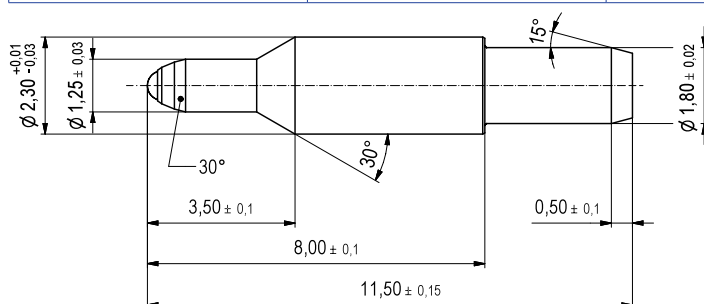
Model 168

Tip N°	Housing material	Ball material	Ball ø (mm)
168	NS	TC	0.7



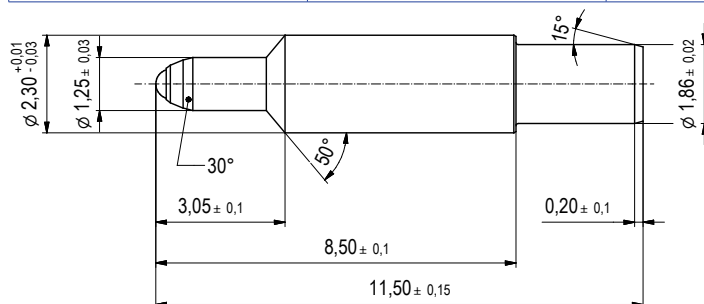
Model 266

Tip N°	Housing material	Ball material	Ball ø (mm)
266	NS	TC	0.5 - 0.6 - 0.7 - 1.0



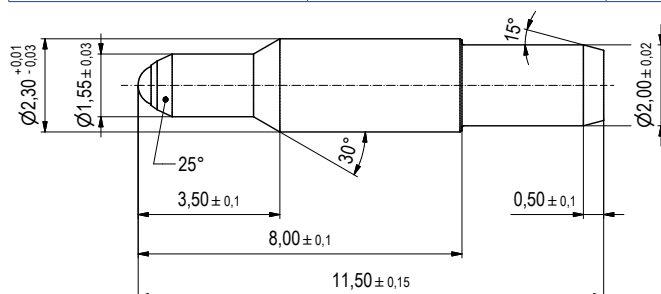
Model 278

Tip N°	Housing material	Ball material	Ball ø (mm)
278	NS	TC	0.7



Model 262

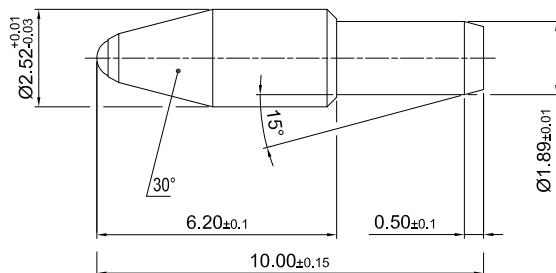
Tip N°	Housing material	Ball material	Ball ø (mm)
262	NS	TC	0.7 - 1.0



HOUSING Ø2.52 MM

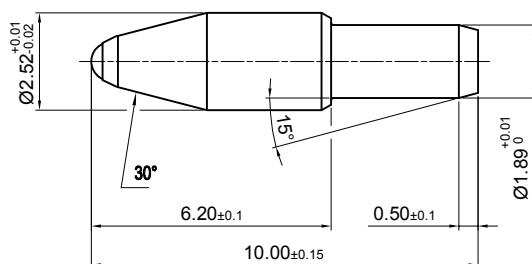
Model 114

Tip N°	Housing material	Ball material	Ball ø (mm)
114	BNP	SS - TC	1.0
	NS	TC	0.5 - 0.7 - 0.8 - 1.0 - 1.2



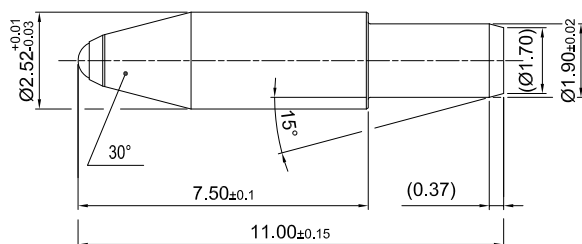
Model 116

Tip N°	Housing material	Ball material	Ball ø (mm)
116	SS (available Pb-Free)	TC	0.8 - 1.0 - 1.2 - 1.4



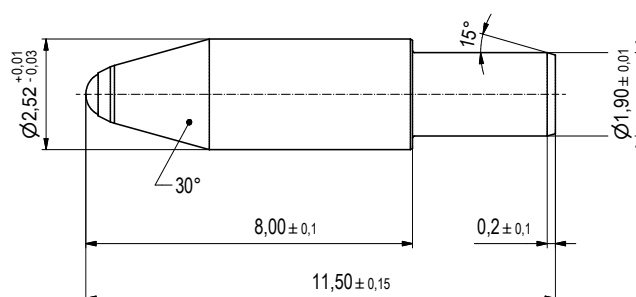
Model 121

Tip N°	Housing material	Ball material	Ball ø (mm)
121	SS (available Pb-Free)	TC	1.0



Model 216

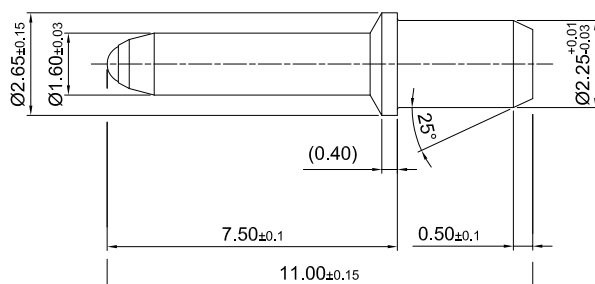
Tip N°	Housing material	Ball material	Ball ø (mm)
216	SS (available Pb-Free)	TC	0.8 - 1.0



X10, X20, C1 & DIN

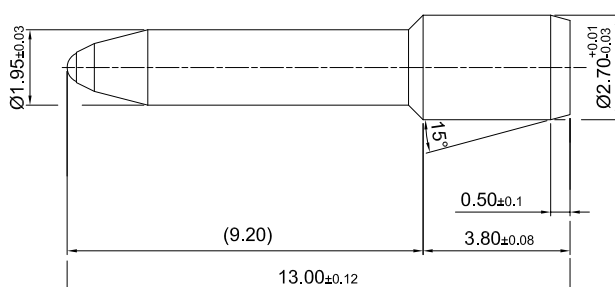
Model 221

Tip N°	Housing material	Ball material	Ball ø (mm)
221	B	SS - TC	1.0



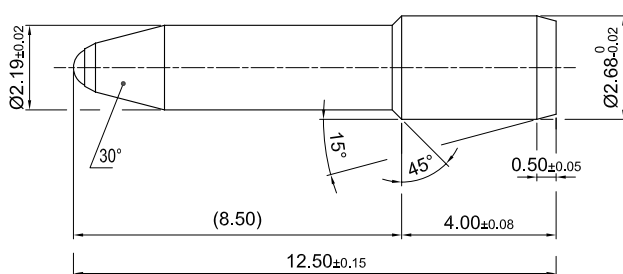
Model 345

Tip N°	Housing material	Ball material	Ball ø (mm)
345	NS	TC	0.8 - 1.0



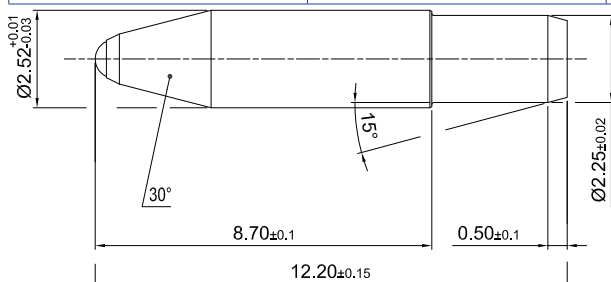
Model 348

Tip N°	Housing material	Ball material	Ball ø (mm)
348	NS	TC	0.8 - 1.0



Model 350

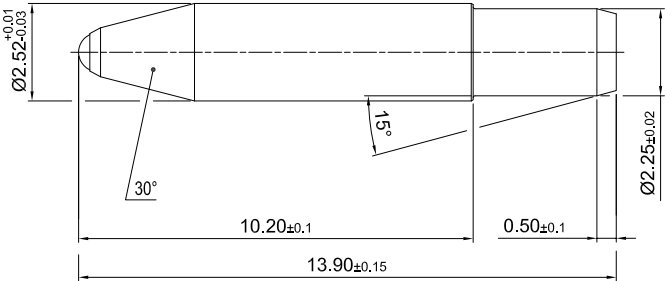
Tip N°	Housing material	Ball material	Ball ø (mm)
350	NS - SS (available Pb-Free)	TC	1.0



X10, X20, C1 & DIN

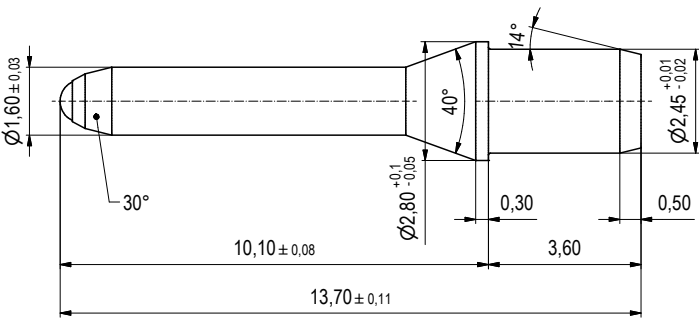
Model 355

Tip N°	Housing material	Ball material	Ball ø (mm)
355	BNP	SS - TC	1.0



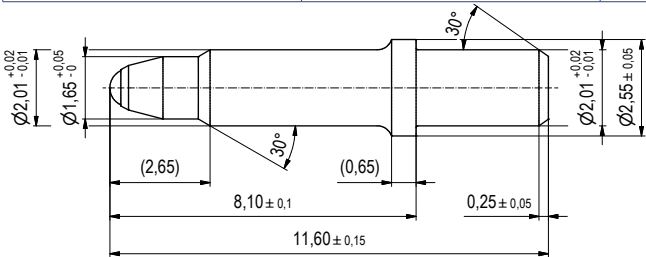
Model 434

Tip N°	Housing material	Ball material	Ball ø (mm)
434	B	TC	1.0



Model 361

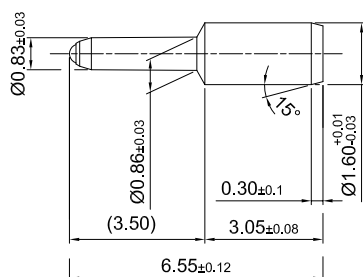
Tip N°	Housing material	Ball material	Ball ø (mm)
361	NS	TC	1.0



MINITIPS Ø1.60 MM

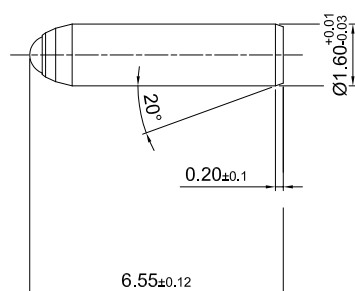
Model 554

Tip N°	Housing material	Ball material	Ball ø (mm)
554	NS	TC	0.5



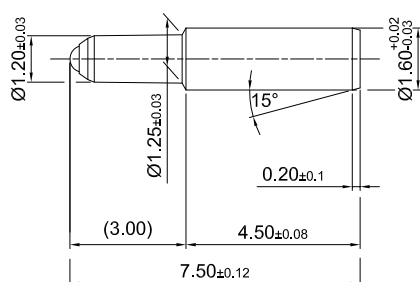
Model 556

Tip N°	Housing material	Ball material	Ball ø (mm)
556	NS - SS (available Pb-Free)	TC	0.5 - 0.7 - 1.0



Model 564

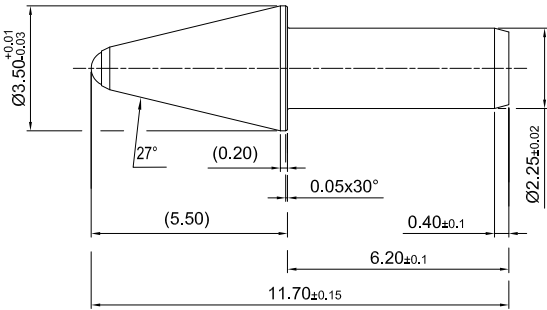
Tip N°	Housing material	Ball material	Ball ø (mm)
564	NS	TC	0.7



TIPS WITH SHOULDER

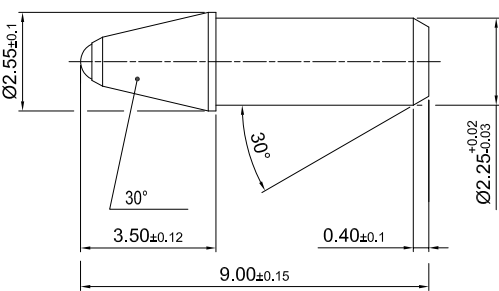
Model 111

Tip N°	Housing material	Ball material	Ball ø (mm)
111	BNP	TC	1.0



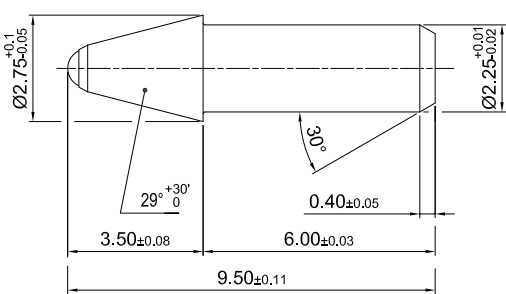
Model 581

Tip N°	Housing material	Ball material	Ball ø (mm)
581	B	SS - TC	0.8 - 1.0



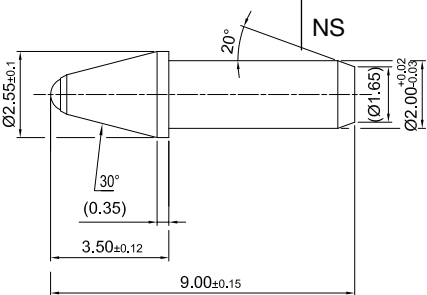
Model 582

Tip N°	Housing material	Ball material	Ball ø (mm)
582	B - NS	TC	0.8 - 1.0



Model 583

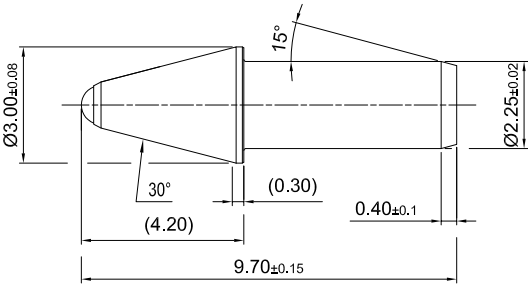
Tip N°	Housing material	Ball material:	Ball ø (mm):
583	B	SS - TC	0.8 - 1.0
	NS	TC	0.8 - 1.0



TIPS WITH SHOULDER

Model 585

Tip N°	Housing material	Ball material	Ball ø (mm)
585	BNP	TC	1.0



Notes

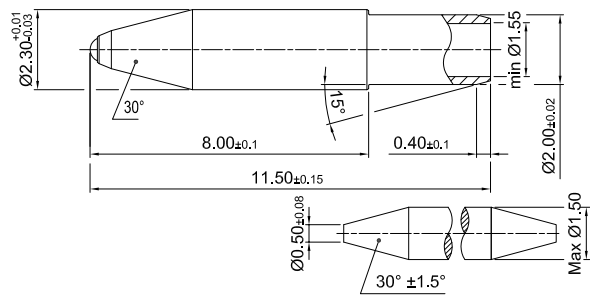
Roller Tips Not Assembled

Key for the tip configuration Example 112NS/05TC	
NS	Tip body material / SS = stainless steel / NS = nickel silver / BNP = Brass nickel plated / B = Brass
0.5	Ball diameter in mm
TC	Material of the ball / TC = tungsten carbide / SS = stainless steel / CM & CC = special carbide preventing corrosion
Additional information	
ESxx	Set-up of the tip / identifies writing performance properties & ink type range Ask for our assistance to identify the set-up number suitable to meet your requirements
Code number	Premec ERP-item number / it summarizes in one unique number all tip- and specification-parameters

ROLLER TIPS Ø2.30 MM

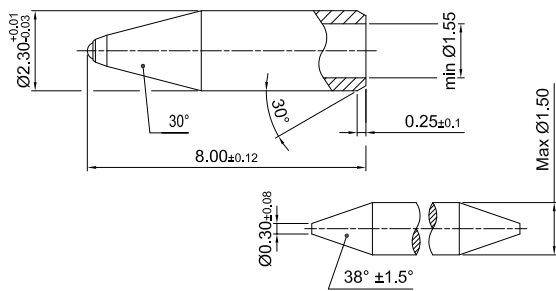
Model 822

Tip N°	Housing material	Ball material	Ball ø (mm)
822	SS (available Pb-Free)	CM	0.5 - 0.6 - 0.7



Model 823

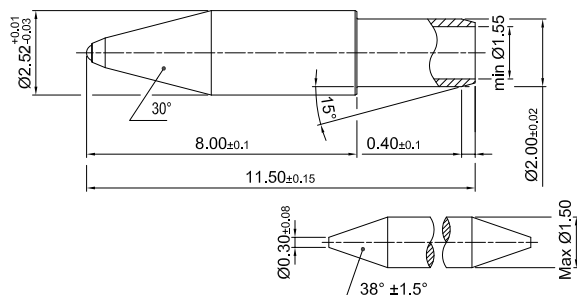
Tip N°	Housing material	Ball material	Ball ø (mm)
823	SS (available Pb-Free)	CM	0.5 - 0.7 - 0.8



ROLLER TIPS Ø2.52 MM

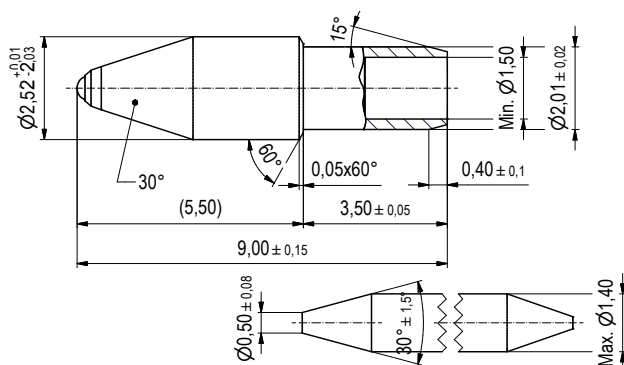
Model 821

Tip N°	Housing material	Ball material	Ball ø (mm)
821	SS (available Pb-Free)	CM	0.5 - 0.7



Model 838

Tip N°	Housing material	Ball material	Ball ø (mm)
838	NS	CM	0.6 - 0.7
	SS (available Pb-Free)	CM	0.7



Roller Tips

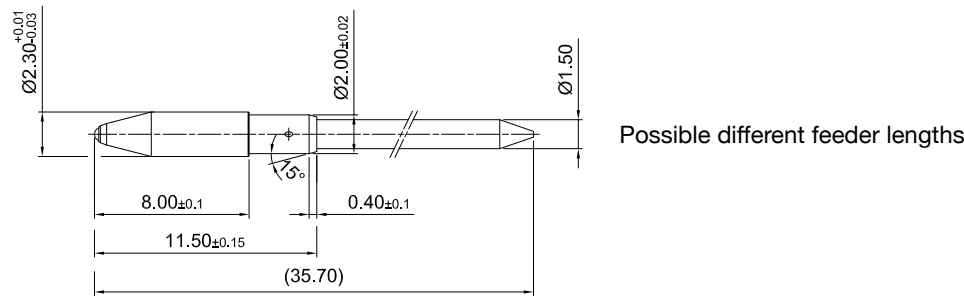
Assembled with PE feeder

Key for the tip configuration Example 112NS/05TC	
NS	Tip body material / SS = stainless steel / NS = nickel silver / BNP = Brass nickel plated / B = Brass
0.5	Ball diameter in mm
TC	Material of the ball / TC = tungsten carbide / SS = stainless steel / CM & CC = special carbide preventing corrosion
Additional information	
ESxx	Set-up of the tip / identifies writing performance properties & ink type range Ask for our assistance to identify the set-up number suitable to meet your requirements
Code number	Premec ERP-item number / it summarizes in one unique number all tip- and specification-parameters

HOUSING Ø2.30 MM

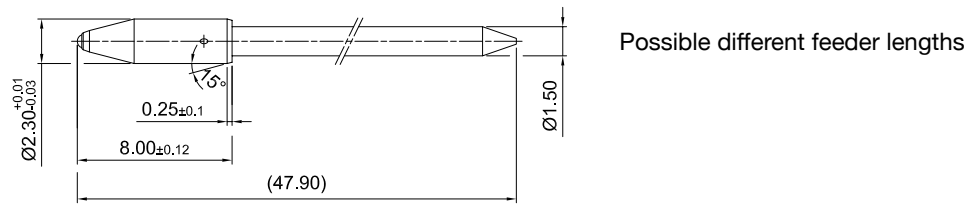
Model 822

Tip N°	Feeder type	Housing material	Ball material	Ball ø (mm)
822	FA-FC	SS (available Pb-Free)	CM	0.5 - 0.6 - 0.7



Model 823

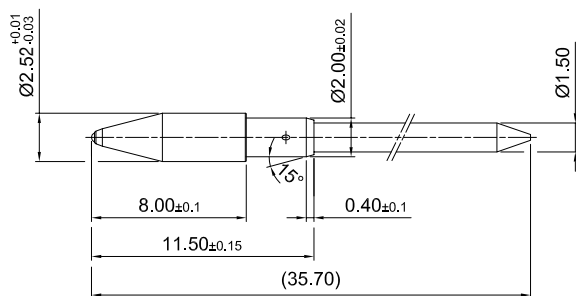
Tip N°	Feeder type	Housing material	Ball material	Ball ø (mm)
823	FA-FC	SS (available Pb-Free)	CM	0.5 - 0.7



ROLLER TIPS Ø2.52 MM

Model 821

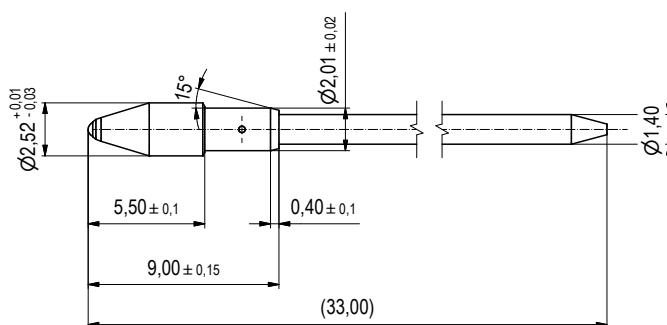
Tip N°	Feeder type	Housing material	Ball material	Ball ø (mm)
821	FA-FC	SS (available Pb-Free)	CM	0.5 - 0.7



Possible different feeder lengths

Model 838

Tip N°	Feeder type	Housing material	Ball material	Ball ø (mm)
838	FA-FC	NS	CM	0.6 - 0.7
	FA - FC	SS (available Pb-Free)	CM	0.7



Possible different feeder lengths

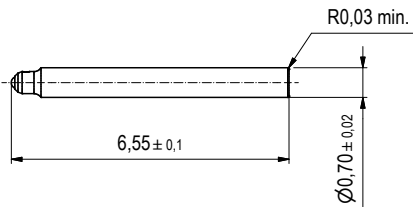
Gel Tips

Key for the tip configuration Example 112NS/05TC	
NS	Tip body material / SS = stainless steel / NS = nickel silver / BNP = Brass nickel plated / B = Brass
0.5	Ball diameter in mm
TC	Material of the ball / TC = tungsten carbide / SS = stainless steel / CM & CC = special carbide preventing corrosion
Additional information	
ESxx	Set-up of the tip / identifies writing performance properties & ink type range Ask for our assistance to identify the set-up number suitable to meet your requirements
Code number	Premec ERP-item number / it summarizes in one unique number all tip- and specification-parameters

PIPE GEL TIPS

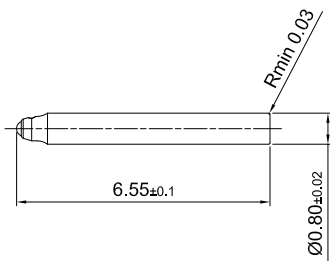
Model 640

Tip N°	Body	Housing material	Ball material	Ball ø (mm)
640	0.70	SS (available Pb-Free)	CM - CC	0.3



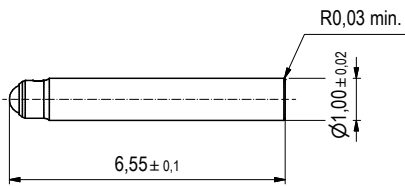
Model 640

Tip N°	Body	Housing material	Ball material	Ball ø (mm)
640	0.80	SS (available Pb-Free)	CM - CC	0.4 - 0.5



Model 640

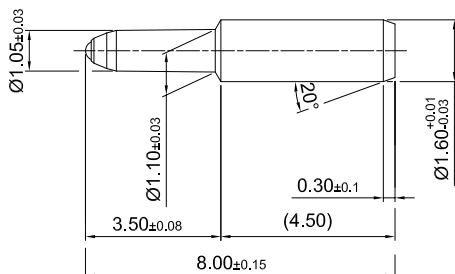
Tip N°	Body	Housing material	Ball material	Ball ø (mm)
640	1.00	SS (available Pb-Free)	CM - CC	0.7



MINI GEL TIPS Ø1.60 MM

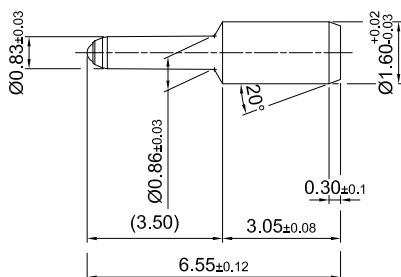
Model 652

Tip N°	Housing material	Ball material	Ball ø (mm)
652	SS (available Pb-Free)	CM-CC	0.4 - 0.5



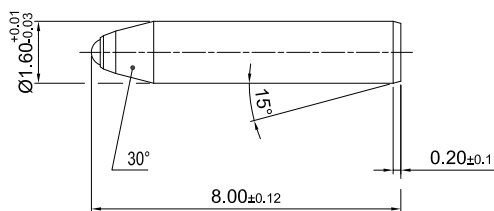
Model 654

Tip N°	Housing material	Ball material	Ball ø (mm)
654	SS (available Pb-Free)	CM-CC	0.4 - 0.5



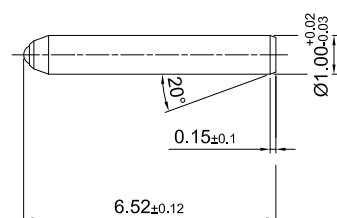
Model 655

Tip N°	Housing material	Ball material	Ball ø (mm)
655	SS (available Pb-Free)	CM-CC	0.7



Model 660

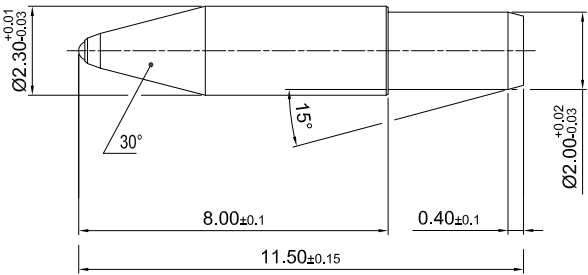
Tip N°	Housing material	Ball material	Ball ø (mm)
660	SS (available Pb-Free)	CM-CC	0.4 - 0.5 - 0.6



GEL TIPS Ø2.30 MM

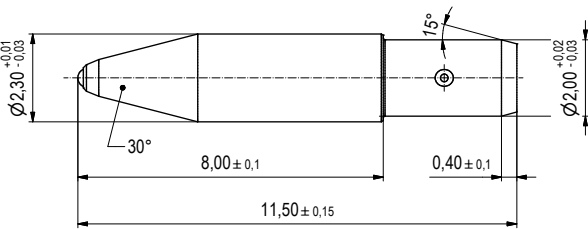
Model 670

Tip N°	Housing material	Ball material	Ball ø (mm)
670	NS	CM - CC	0.7 - 0.8 - 1.0
	SS (available Pb_Free)	CM - CC	0.4 - 0.5 - 0.6 - 0.7 - 0.8 - 1.0



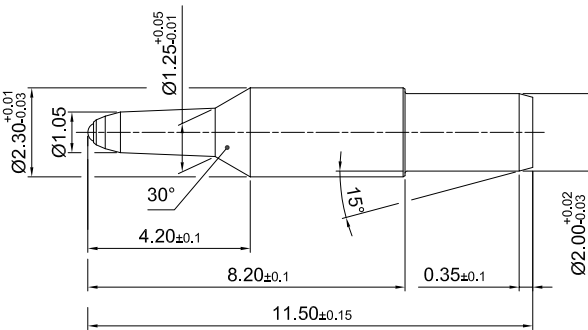
Model 670
with spring

Tip N°	Housing material	Ball material	Ball ø (mm)
670/CS	NS	CM - CC	1.0
	SS (available Pb_Free)	CM - CC	0.4 - 0.5 - 0.55 - 0.7 - 0.8 - 1.0



Model 681

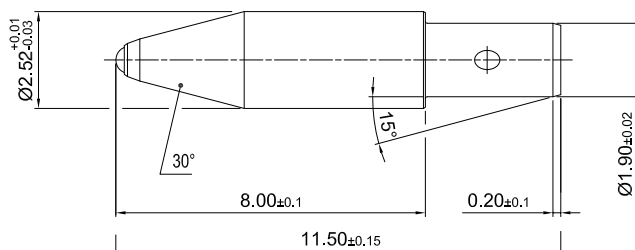
Tip N°	Housing material	Ball material	Ball ø (mm)
681	SS (available Pb-Free)	CM-CC	0.3 - 0.4 - 0.5



GEL TIPS Ø2.52 MM

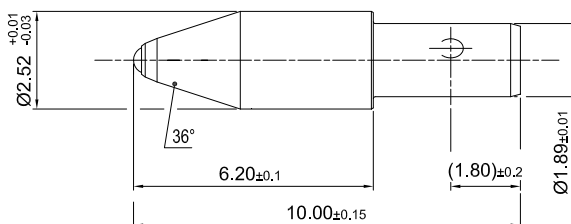
Model 691 with spring

Tip N°	Housing material	Ball material	Ball ø (mm)
691/CS	SS (available Pb-Free)	CM - CC	0.5 - 0.7



Model 697 with spring

Tip N°	Housing material	Ball material	Ball ø (mm)
697/CS	SS (available Pb-Free)	CM-CC	0.4 - 0.5 - 0.6 - 0.7 - 1.0



Notes

Pagani Pens SA
Via Ponteggia 19
6814 Cadempino
Switzerland

Premec
Via Ponteggia 19
6814 Cadempino
Switzerland

sales@premec.ch

Premec Tools
Via Roncaglia 16
6883 Novazzano
Switzerland

info@premec-tools.ch